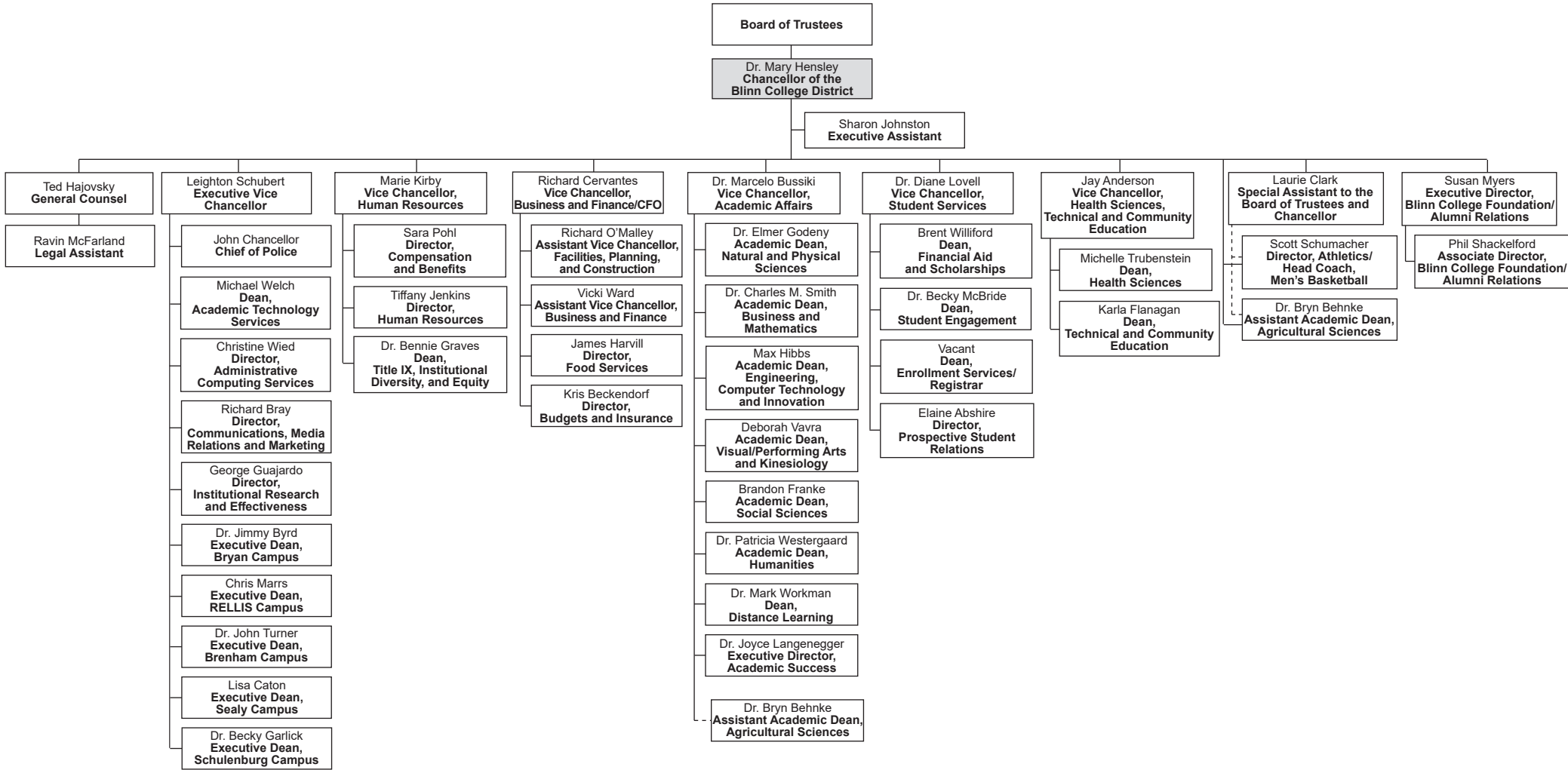
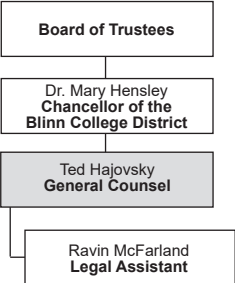


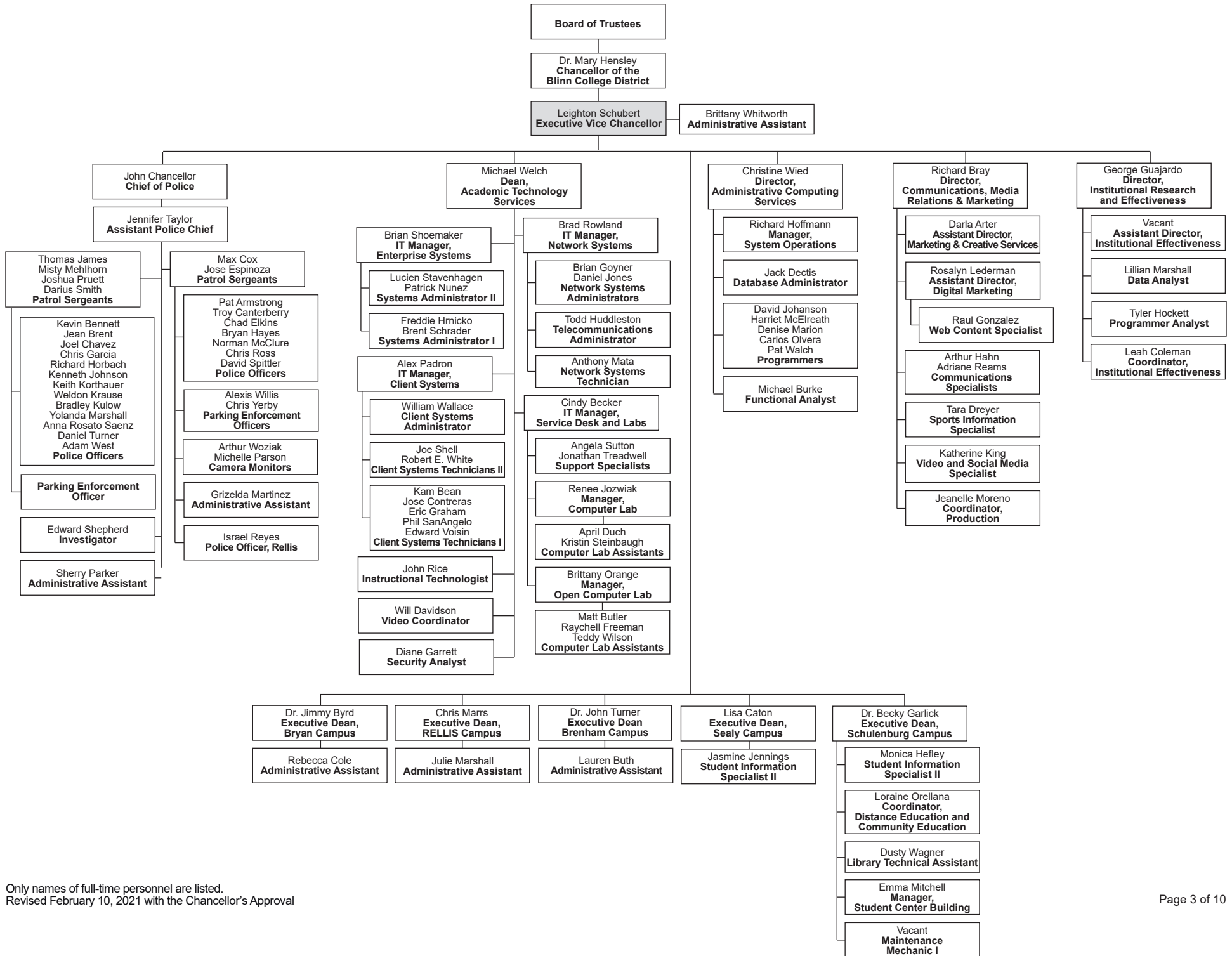
# BLINN COLLEGE ORGANIZATION BY PERSONNEL



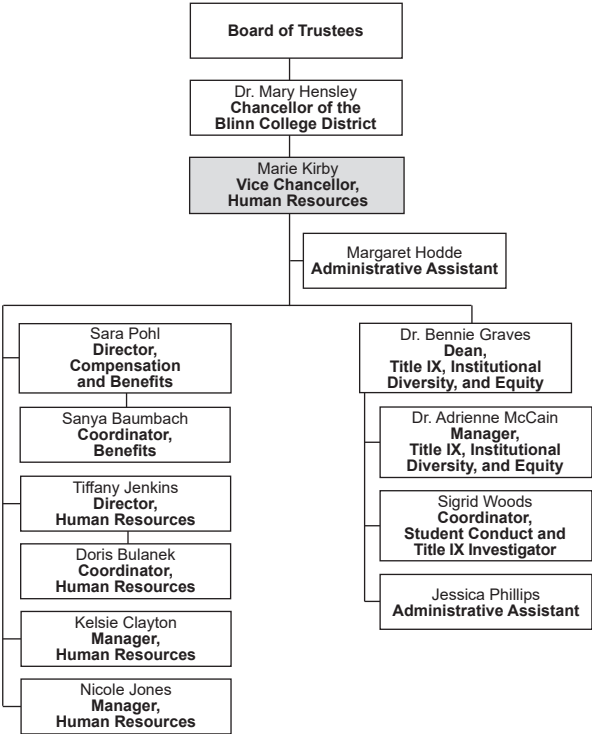
# BLINN COLLEGE ORGANIZATION BY PERSONNEL



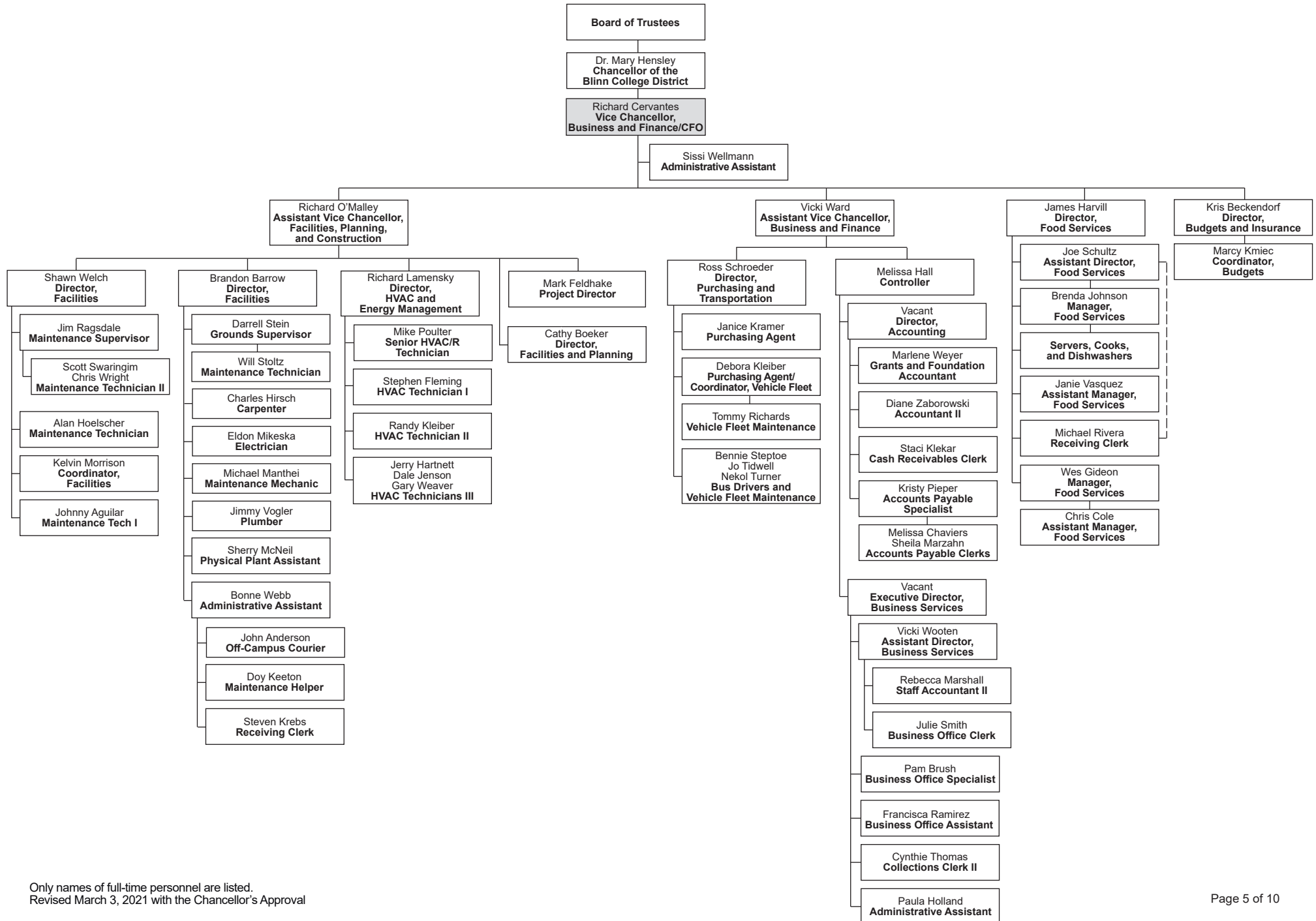
# BLINN COLLEGE ORGANIZATION BY PERSONNEL



# BLINN COLLEGE ORGANIZATION BY PERSONNEL

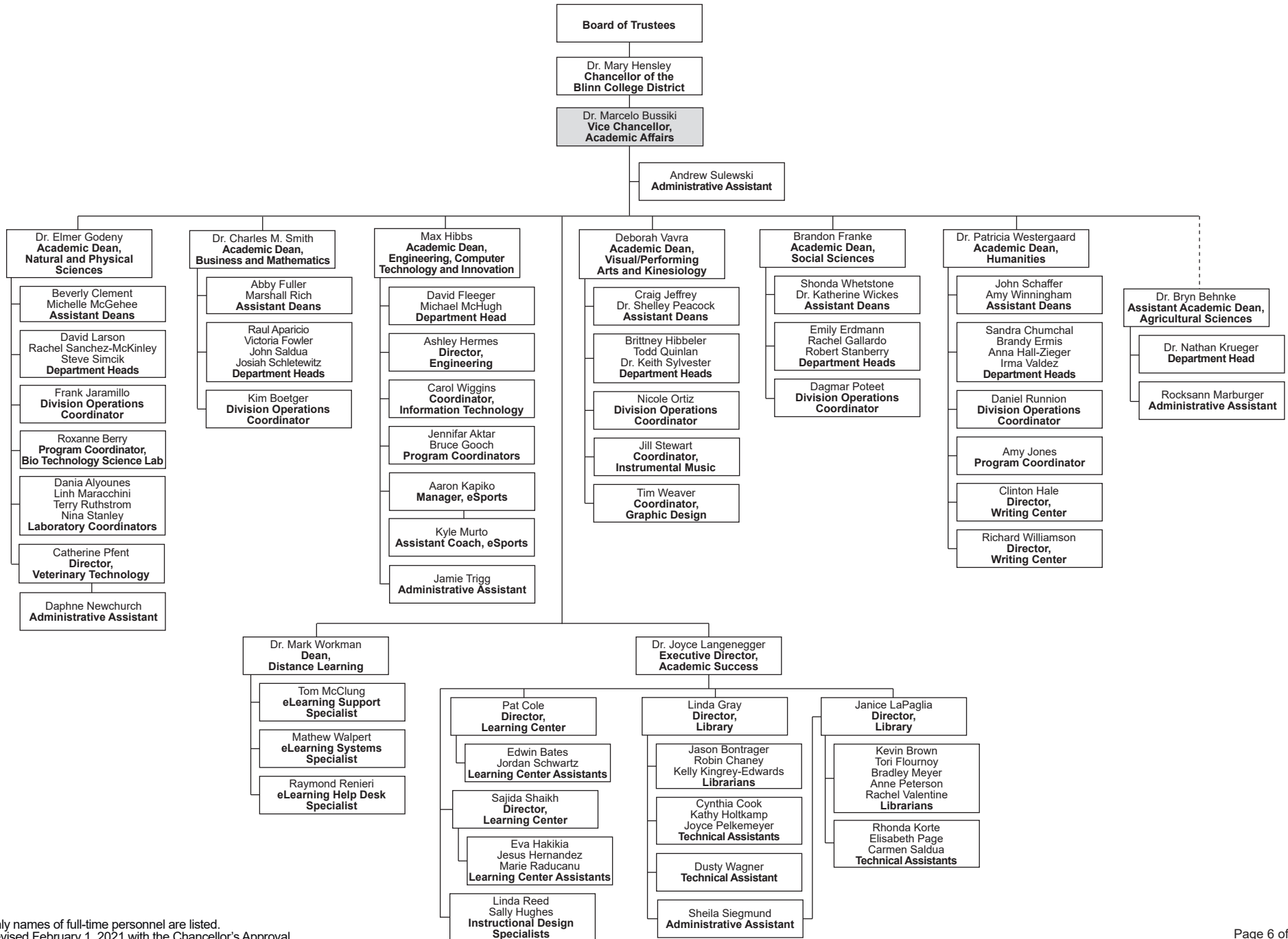


# BLINN COLLEGE ORGANIZATION BY PERSONNEL

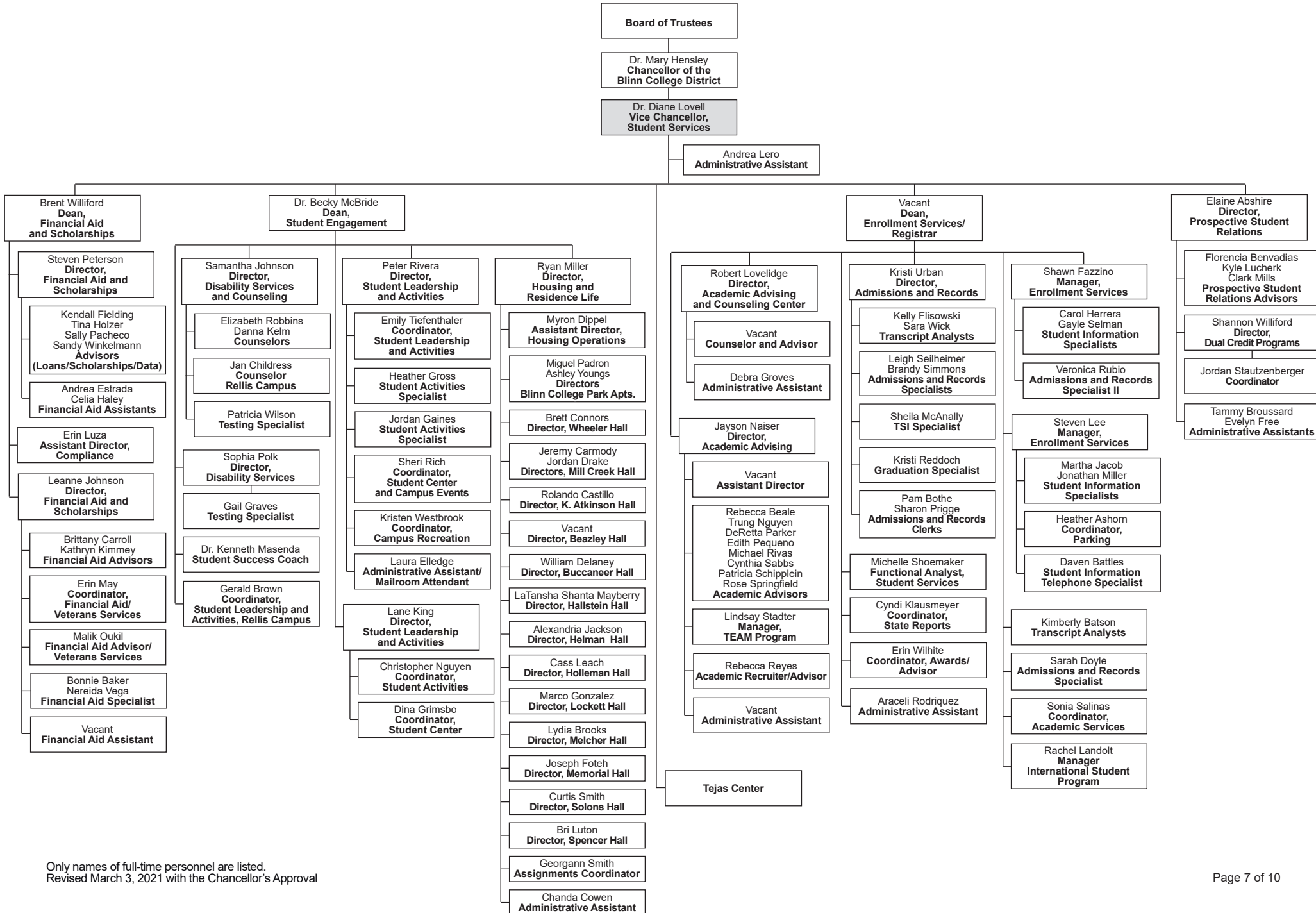


Only names of full-time personnel are listed.  
Revised March 3, 2021 with the Chancellor's Approval

# BLINN COLLEGE ORGANIZATION BY PERSONNEL

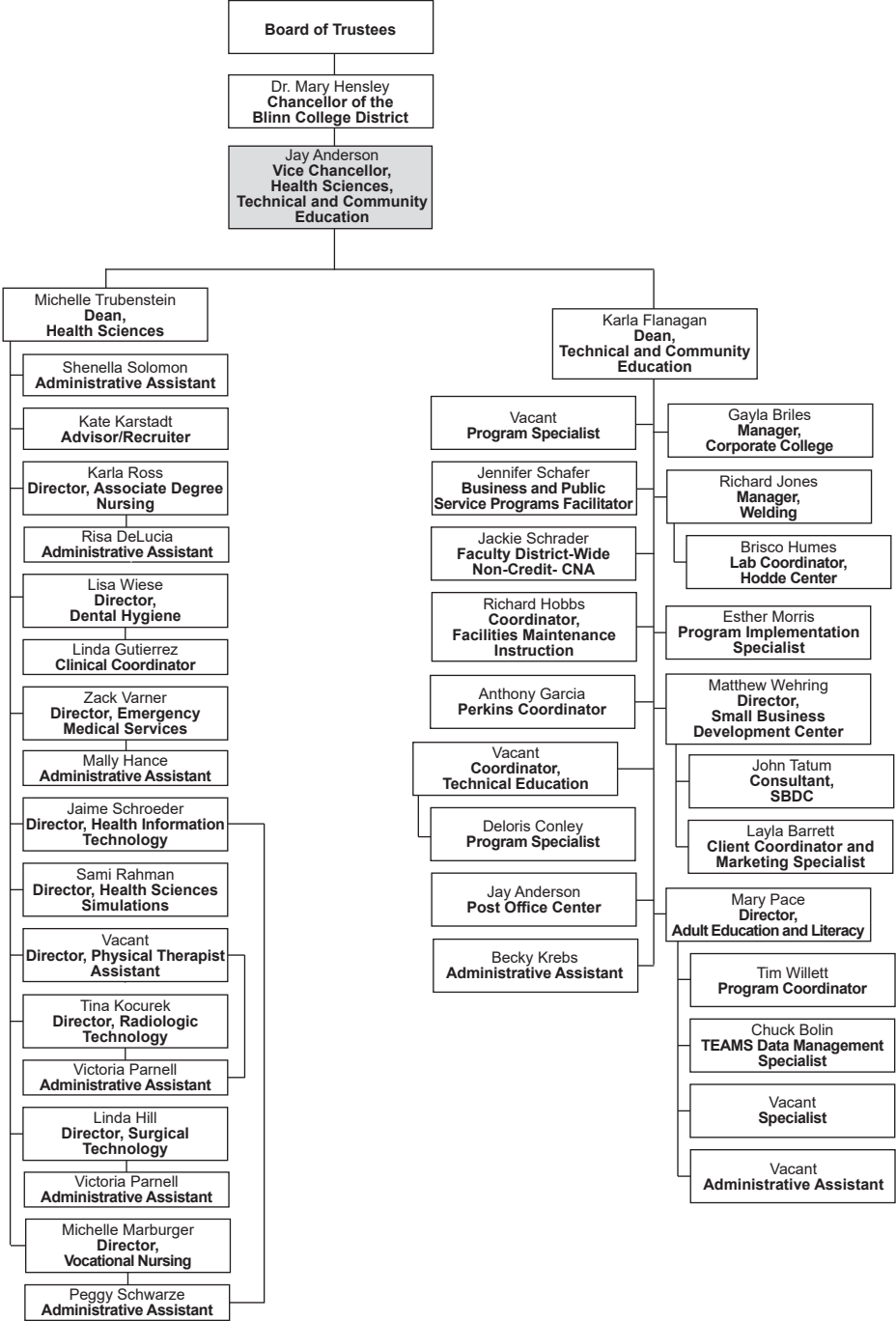


# BLINN COLLEGE ORGANIZATION BY PERSONNEL



Only names of full-time personnel are listed.  
Revised March 3, 2021 with the Chancellor's Approval

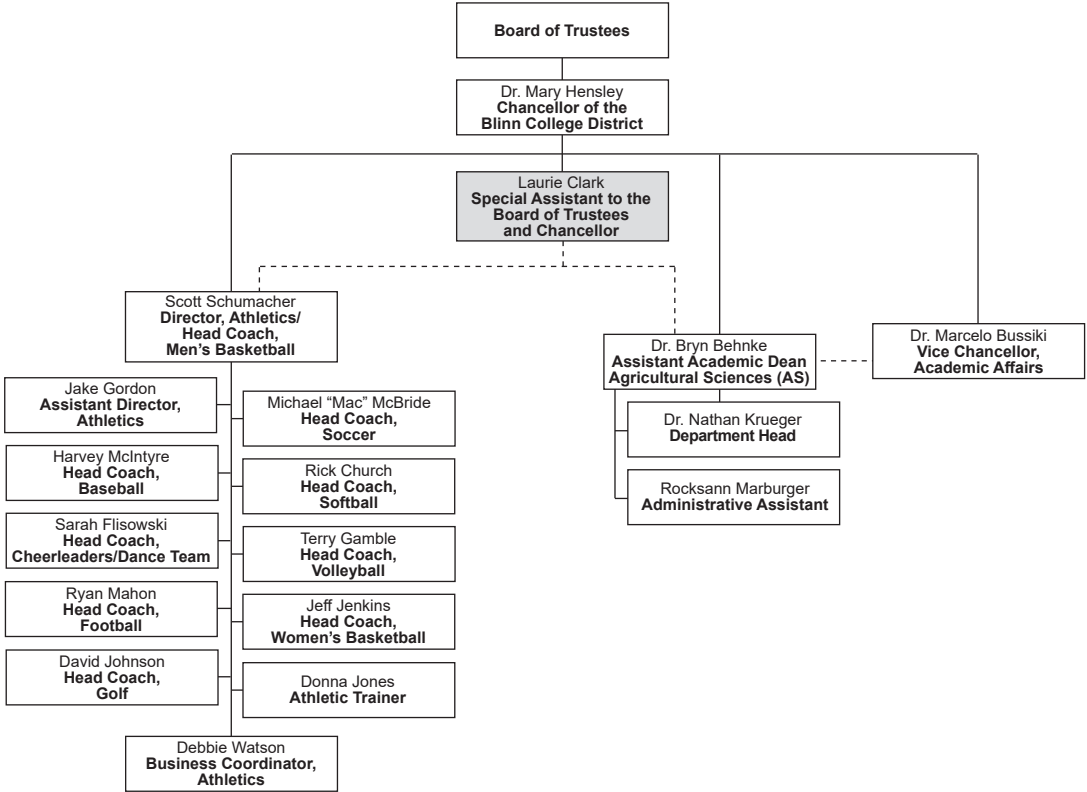
# BLINN COLLEGE ORGANIZATION BY PERSONNEL



Only names of full-time personnel are listed.  
Revised January 29, 2021 with the Chancellor's Approval



# BLINN COLLEGE ORGANIZATION BY PERSONNEL



Only names of full-time personnel are listed.  
Revised July 1, 2020 with the Chancellor's Approval

# BLINN COLLEGE ORGANIZATION BY PERSONNEL

