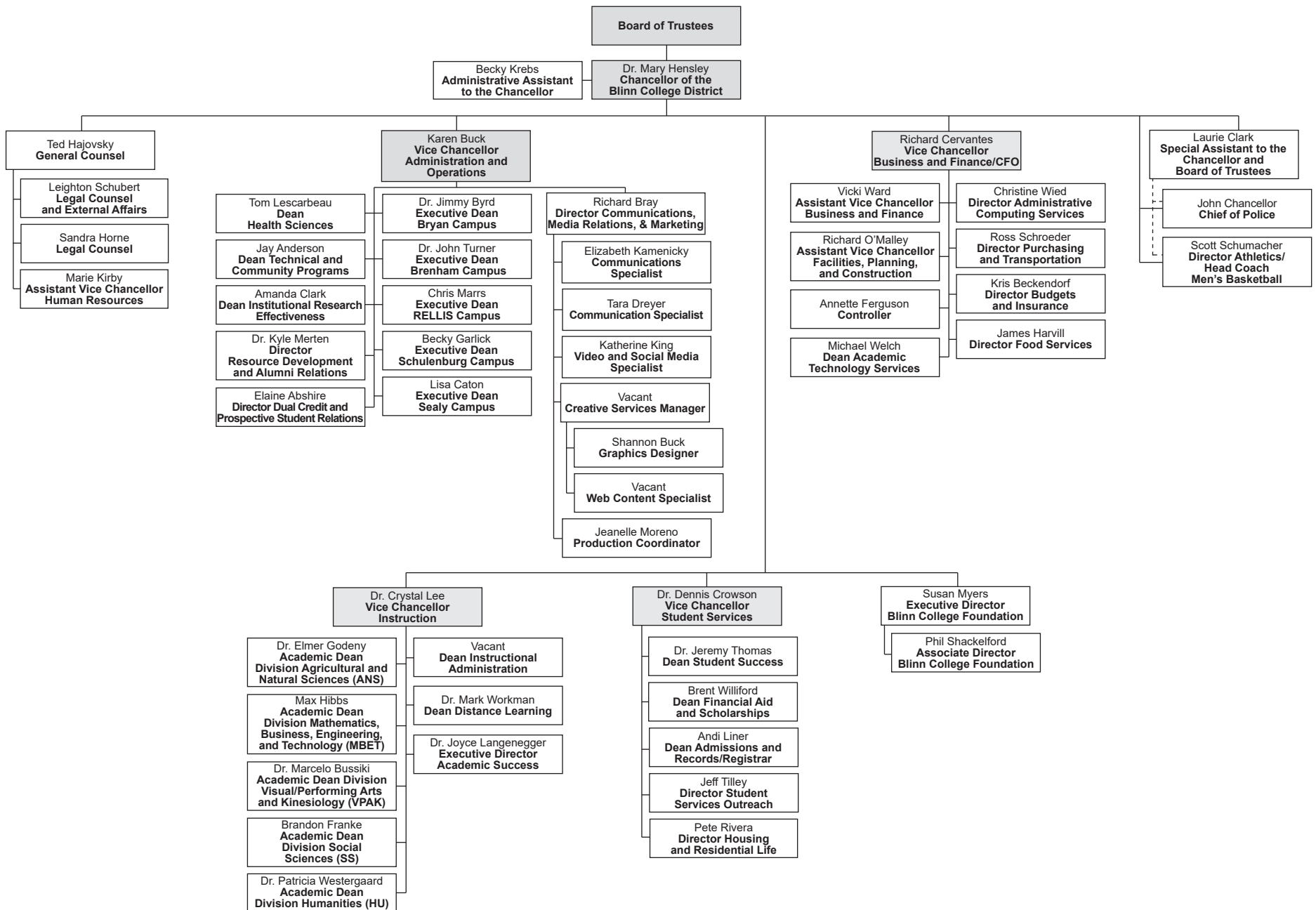
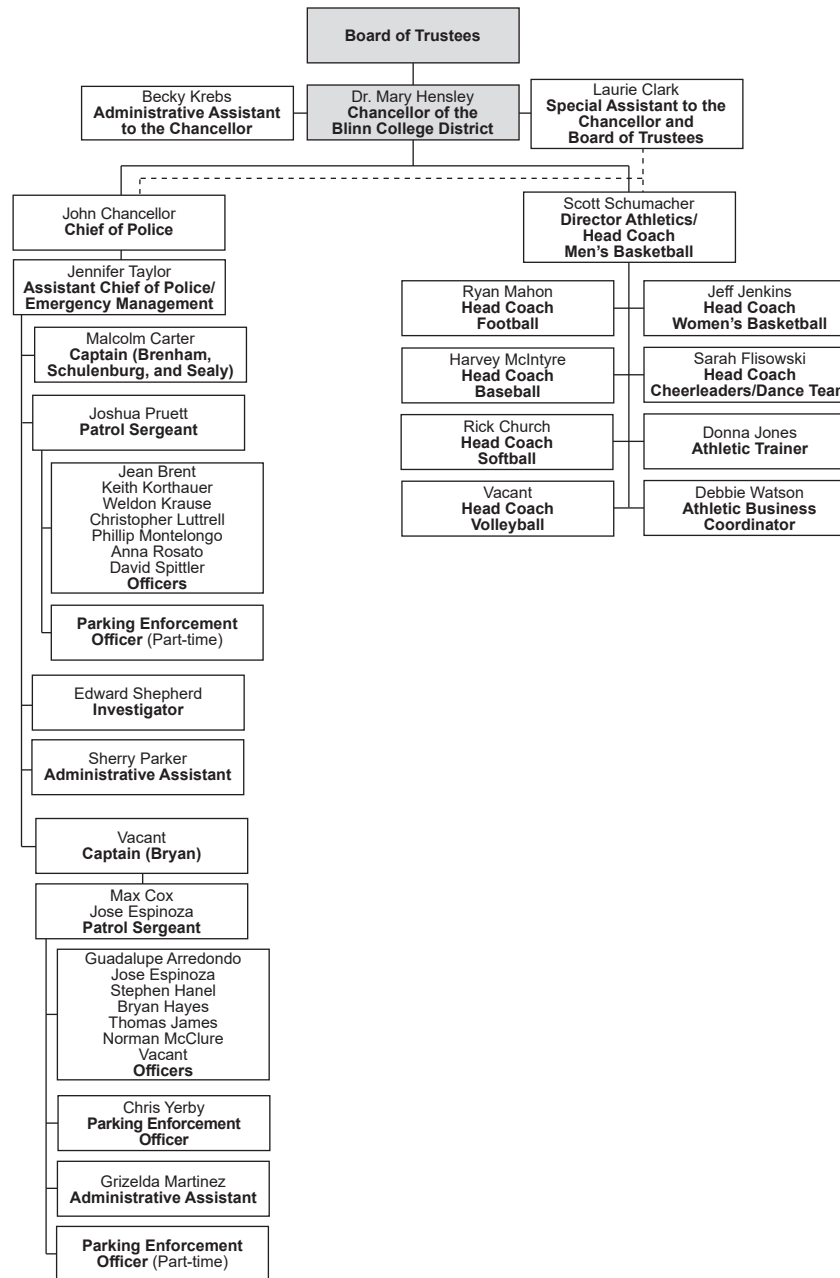


BLINN COLLEGE ORGANIZATION BY PERSONNEL

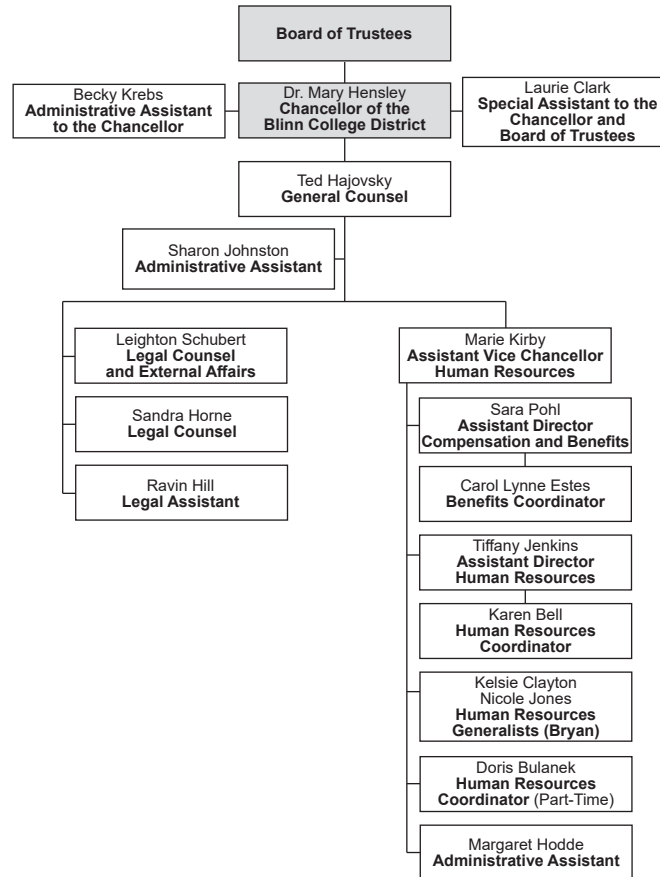


Only names of full-time personnel are listed.
Revised March 29, 2018 with the Chancellor's Approval

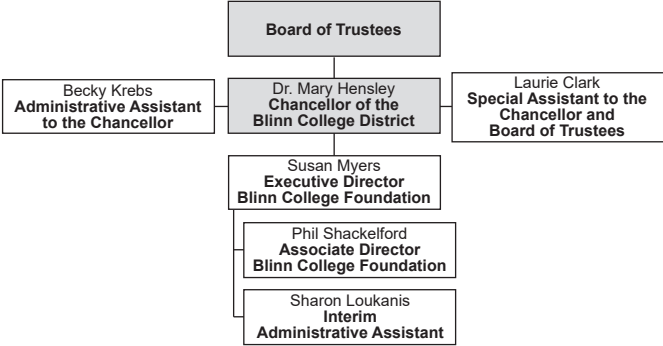
BLINN COLLEGE ORGANIZATION BY PERSONNEL



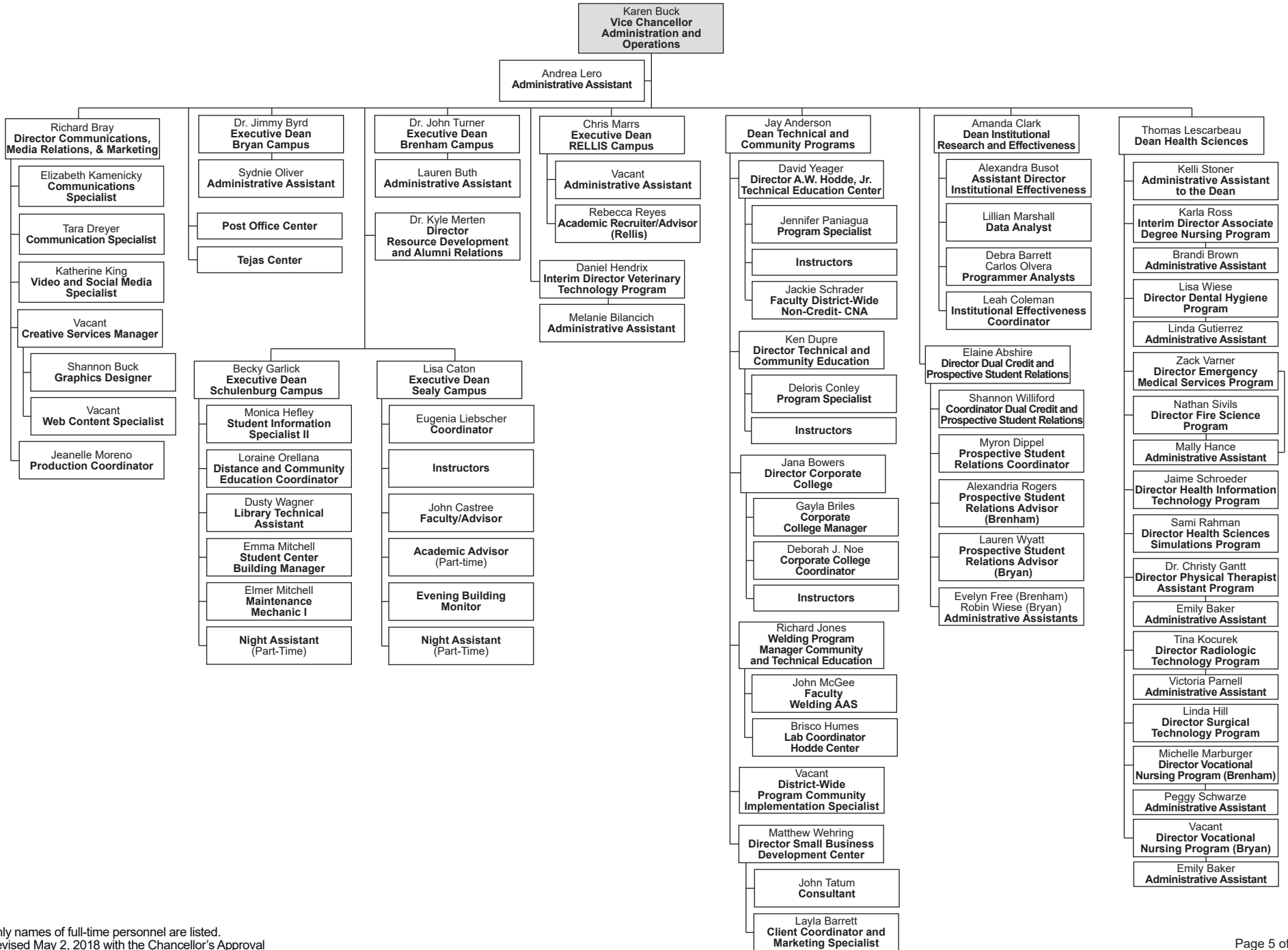
BLINN COLLEGE ORGANIZATION BY PERSONNEL



BLINN COLLEGE ORGANIZATION BY PERSONNEL

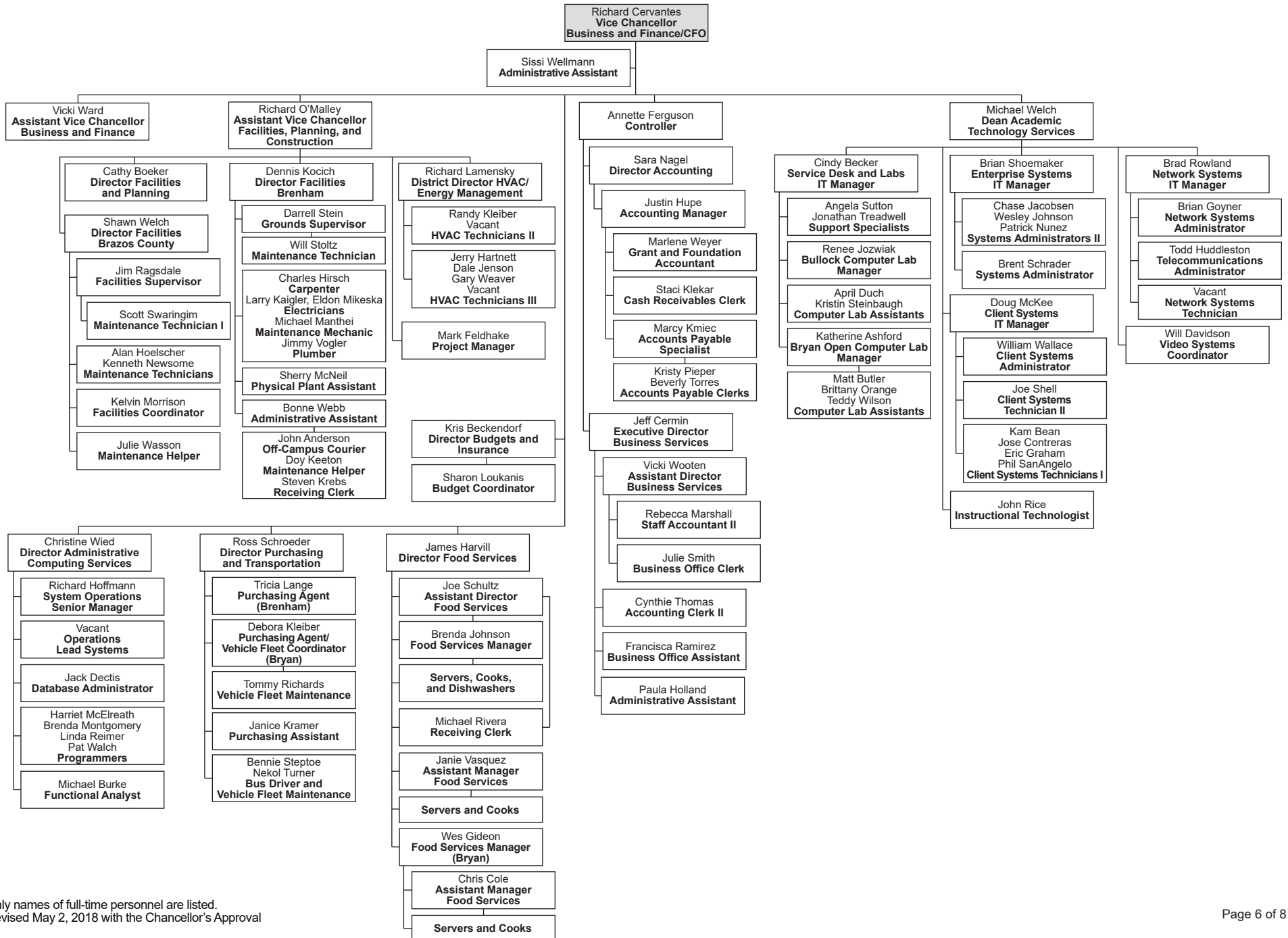


BLINN COLLEGE ORGANIZATION BY PERSONNEL



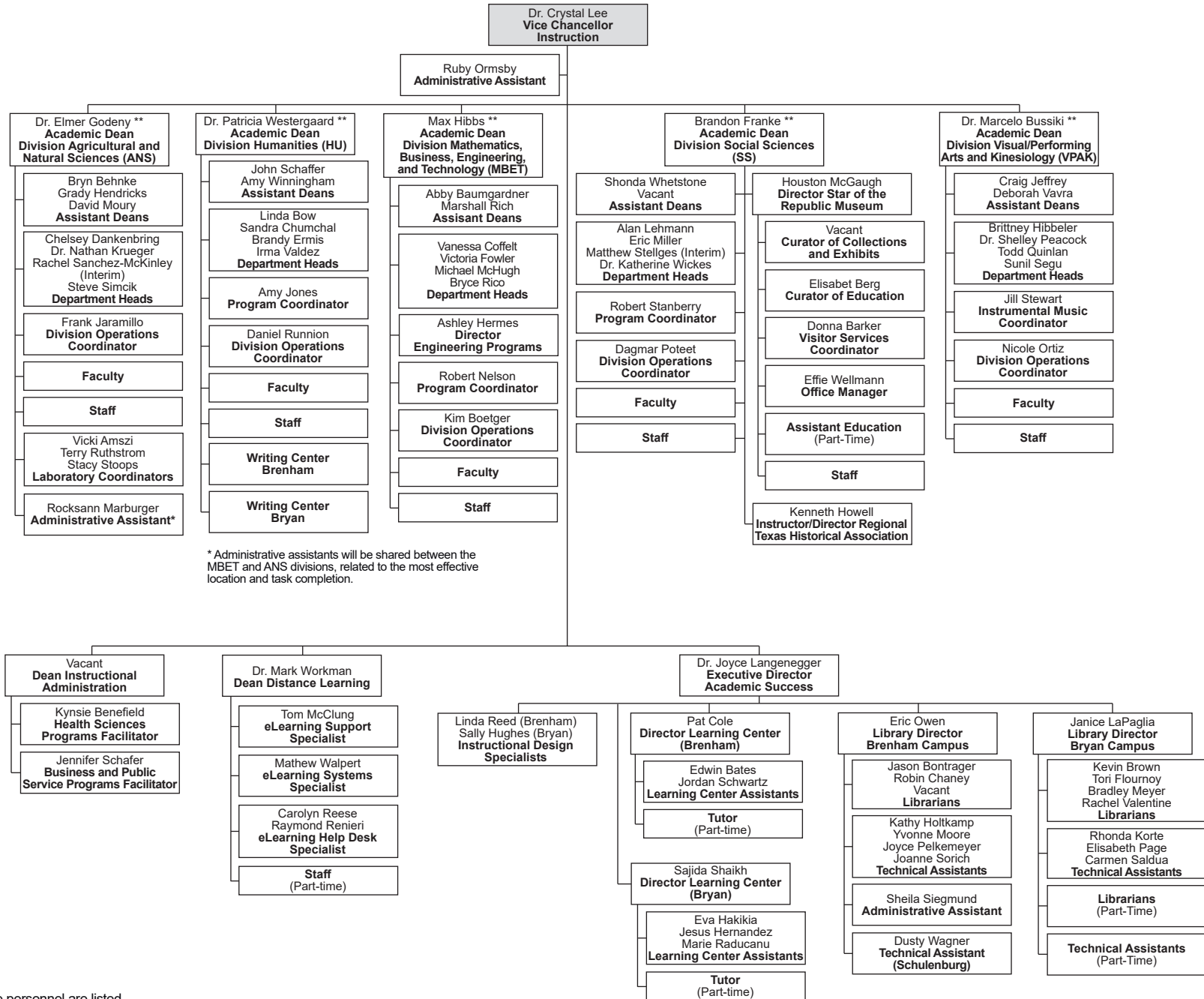
Only names of full-time personnel are listed.
Revised May 2, 2018 with the Chancellor's Approval

BLINN COLLEGE ORGANIZATION BY PERSONNEL



Only names of full-time personnel are listed.
Revised May 2, 2018 with the Chancellor's Approval

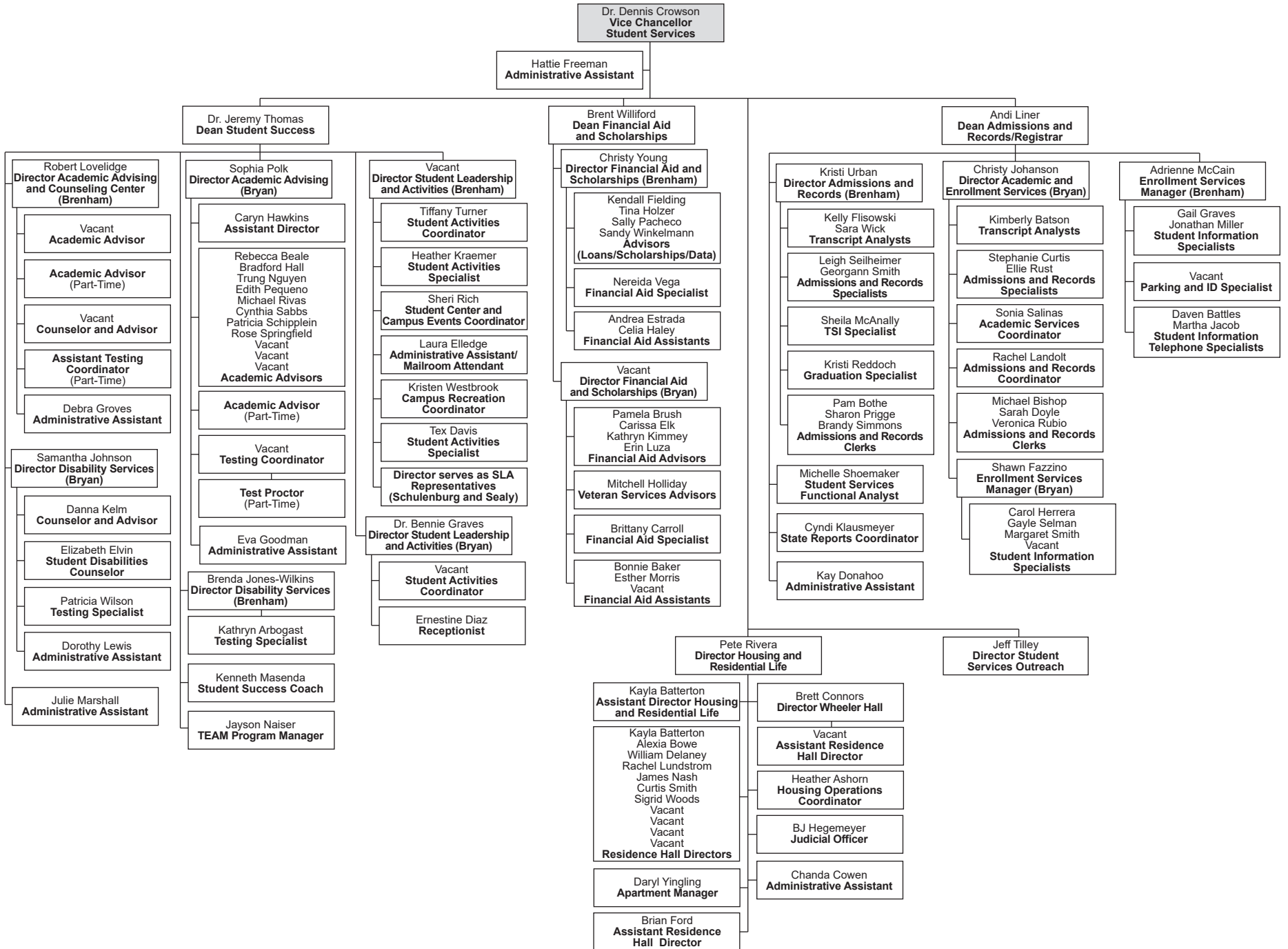
BLINN COLLEGE ORGANIZATION BY PERSONNEL



* Administrative assistants will be shared between the MBET and ANS divisions, related to the most effective location and task completion.

Only names of full-time personnel are listed.
 **Note: These deans also report to Vice Chancellor of Administration and Operations related to applied science programs and Perkins activities.
 Revised April 3, 2018 with the Chancellor's Approval

BLINN COLLEGE ORGANIZATION BY PERSONNEL



Only names of full-time personnel are listed.
Revised May 2, 2018 with the Chancellor's Approval